



Rijkswaterstaat
Ministry of Infrastructure and the
Environment



New North Sea shipping routes to come into force on the 1st of August 2013

The routing system will change extensively

On the 1st of August 2013 00:00 UTC (02:00 local time) the routing system in the Dutch part of the North Sea will change extensively. A number of Traffic Separation Schemes (TSS) will be revised and in the approaches to IJmuiden a new TSS will be introduced. New anchoring areas will be established and others changed. Former ammunition dumping grounds will become "Areas to be Avoided".

Purpose of the revisions

The North Sea is one of the world's most intensively used sea areas. A revision of the routing system is needed to ensure the future safety of shipping, to improve access to the Dutch mainports and to efficiently allocate the marine space.

Transition period

The new routing system comes into force on the 1st of August 2013 00:00 UTC (02:00 local time). Until this moment the old routing system will apply. New nautical charts and ENC's will be released mid June 2013 and all will be available through the usual distributors. All shipmasters are reminded that new nautical charts must be on board before the changes take effect.

Caution!

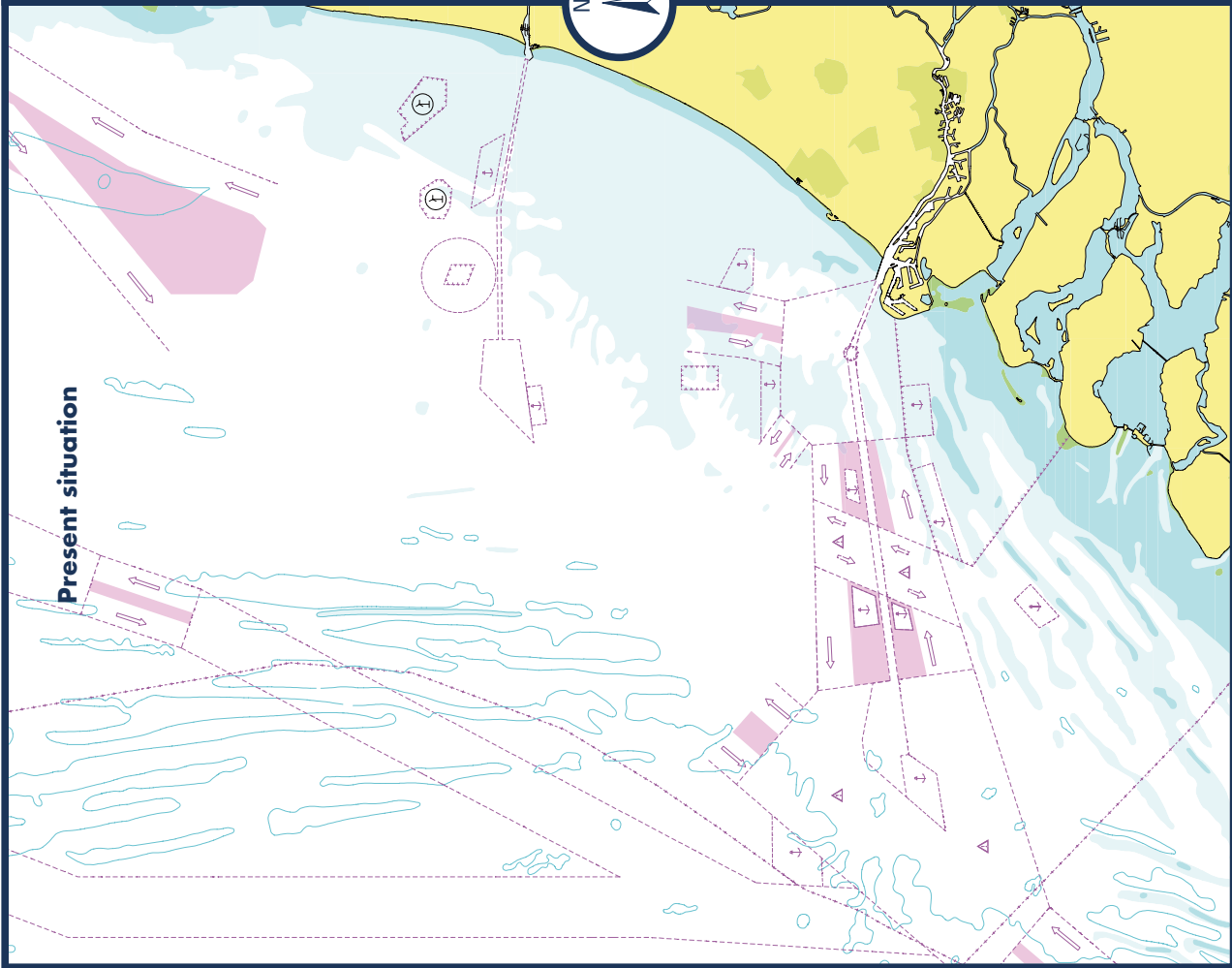
On the 30th and 31st of July and on the 1st of August, numerous buoys will be moved. Before and during the operation, marine traffic will be closely informed through Notices to Mariners and live navigation messages.

More information

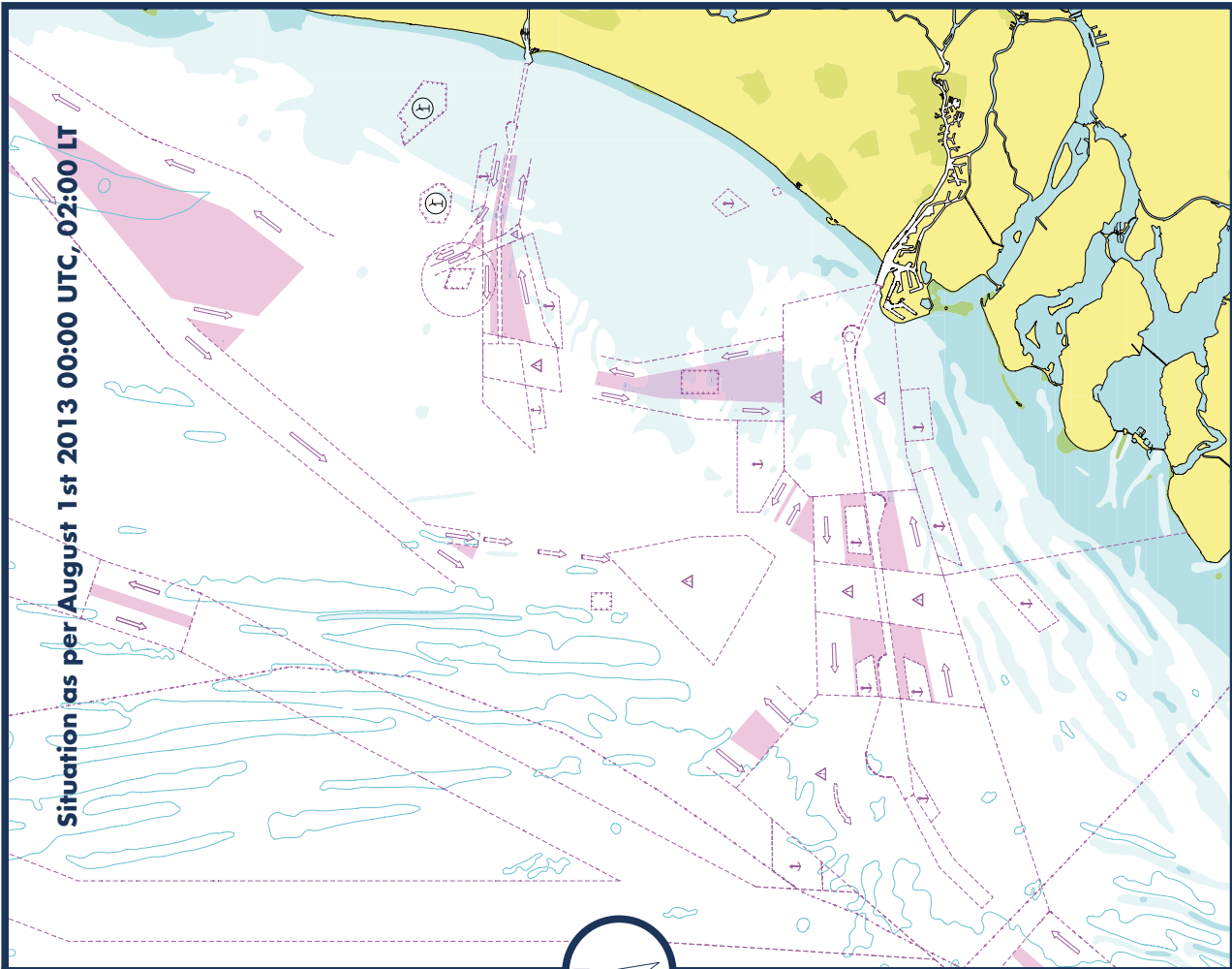
Please consult our website for further information on the changes: www.rws.nl/newshippingroutes.

Notices to Mariners (NtMs) and addresses of chart agents are published on the website of the Netherlands Hydrographic Office: www.hydro.nl and of the United Kingdom Hydrographic Office (UKHO): www.ukho.gov.uk.

This is a Rijkswaterstaat publication in partnership with the Netherlands Hydrographic Office, the Netherlands Coastguard, the port of Amsterdam and the port of Rotterdam. Rijkswaterstaat is the executive body of the Dutch Ministry of Infrastructure and the Environment.



Present situation



Situation as per August 1st 2013 00:00 UTC, 02:00 LT

Announcement to all vessels

On 01/08/13 at 00:00 UTC, 02:00 LT, existing routing measures will be amended and new routing measures will be implemented in the Dutch part of the North Sea.

Charts provided by Netherlands Hydrographic Office.

New edition of charts available as from mid June 2013

For approaches to Rotterdam:

NL/BA 1630 (Int. 1416)

NL/BA 110 (Int. 1473)

NL/BA 122 (Int. 1472)

For approaches to IJmuiden:

NL/BA 1631 (Int. 1418)

NL/BA 125 (Int. 1469)

For through traffic: NL 1035 (Int. 1046); BA 1406, 1408, 2181A

For passage planning: NL 1970

Deep Draught Planning Guide: HP 8

For small craft: NL 1801